

PEG MGF

White cake in sealed glass vial

Expected MW: average 2868.16 for parent peptide, 2968.25 for succinamide

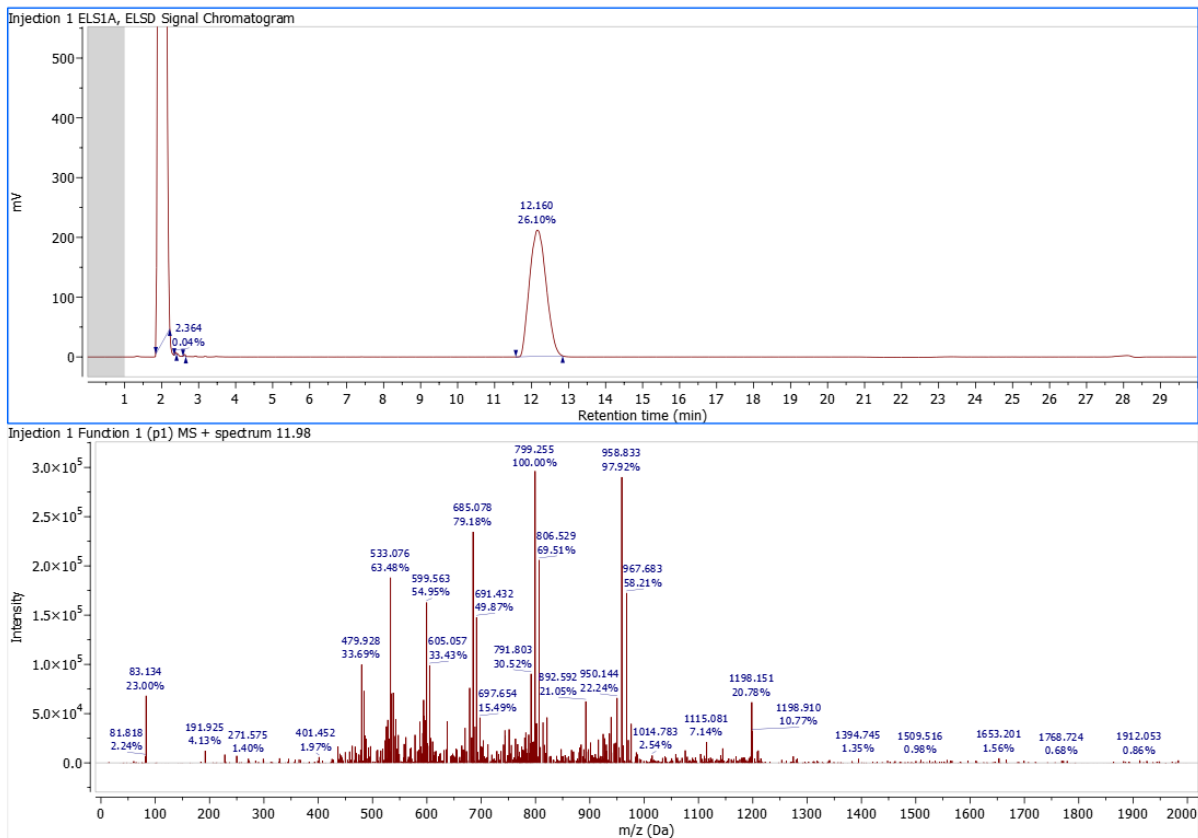
As per sequence Tyr-Gln-Pro-Pro-Ser-Thr-Asn-Lys-Asn-Thr-Lys-Ser-Gln-Arg-Arg-Lys-Gly-Ser-Thr-Phe-Glu-Glu-Arg-Lys

Found: 958.833 ($M+3H^+$) with principal mass for multiple charged cation $M=2873.50$

Observed mass matches target compound (compound is furnished with heterogeneous PEG)

1H NMR: Measured spectra match large peptide with PEG functionalities

qNMR: Vial contains 4.74 ± 0.17 mg of target compound



^1H NMR, D_2O :

